

All proceeds and contributions to the "Visions of Hope" Religious Art Campaign will benefit and support St. Francis Medical Center's mission of serving the sick and poor of Southeast Los Angeles.

For more information on the "Visions of Hope" Religious Art Campaign or featured artist, Lalo Garcia, please contact:

Dennis Robinson, Director of Donor Relations, (310) 900-8460

Ada Rodriguez, Director of Corporate Relations, (310) 900-7308

OUR MISSION

In the spirit of our founders, St. Vincent de Paul, St. Louis de Marillac, and St. Elizabeth Ann Seton, and Daughters of Charity Health System is committed to serving the sick and the poor. With Jesus Christ as our model, we advance and strengthen the healing mission of the Catholic Church by providing comprehensive, excellent health care that is compassionate and attentive to the whole person: body, mind, and spirit. We promote healthy families, responsible stewardship of the environment, and a just society through value-based relationships and community-based collaboration.

OUR VINCENTIAN VALUES

The Charity of Christ urges us to live our Vincentian Values of:

Respect

Recognizing our own value and the value of others.

Compassionate Service

Providing excellent care with gentleness and kindness.

Simplicity

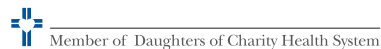
Acting with integrity, clarity and honesty.

Advocacy for the Poor

Supporting those who lack resources for a healthy life and full human development.

Inventiveness to Infinity

Being continuously resourceful and creative.



Visions of HOPE

RELIGIOUS ART CAMPAIGN

featuring Artist LALO GARCIA

Dear Friends,

This year St. Francis Medical Center Foundation celebrates a 25 year legacy of caring for the poor and underserved; a milestone that demonstrates an unyielding commitment to improving the health and well-being of children and families in our service area.

In keeping with our spirit of healing, St. Francis Medical Center Foundation is partnering with world renowned spiritual Latino artist, Lalo Garcia, for the **"Visions of Hope" Religious Art Campaign**. Our mission is to create an oasis of images that will artistically capture our identity as a Catholic ministry, as well as influence the process of healing and recovery to our patients and families we serve at St. Francis Medical Center. The art work will be displayed in entry ways, waiting areas and other locations where our patients and visitors will not only be comforted but will immediately discern that they have entered a sanctuary of hope and healing.

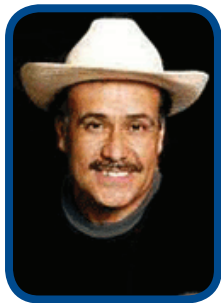
Through the "Vision of Hope" Religious Art Campaign we invite you to join with others who are setting the stage for healing and compassion, both now and in the future. With your generous contribution, your gift will be recognized and listed as part of the dedication of spiritual art work appropriately displayed throughout the hospital.

Again, many thanks for your support of this special endeavor and please know that you will be specially remembered in the Daughters' community prayers. May God continue to reward you for all you do and are.

Sincerely in Christ,


Gerald T. Kozai
President and CEO

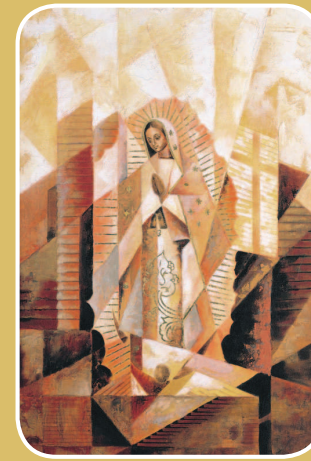

Sr. Caridad Tatayon, D.C.
Senior Vice President,
Mission Integration



Lalo Garcia

Born in La Cieneguita, a small rancho in the state of Michoacan, Mexico, and raised since the age of 13 in the San Fernando Valley north of downtown Los Angeles, celebrated artist Lalo Garcia has spent 35 years immersed in the world of art. Garcia's work has been permanently placed in sacred spaces throughout Los Angeles and the United States. Currently, Garcia is one of eleven commissioned artists selected by the Archdiocese of Los Angeles to create artwork for the Los Angeles Cathedral of the Angels, a major historic landmark.

Contributions to purchase the original painting "Cathedral Guadalupe" starts at \$5,000 and above.



"Cathedral Guadalupe"

Contributions of \$1,000, \$500, \$250 or \$100 will be applied to the purchase of original prints below. Donor names will be listed on our Donor Wall in recognition of your contribution.



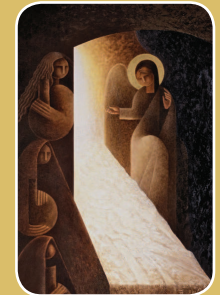
"The Prayer in the Garden"



"Tilma"



"Jesus"



"The Empty Tomb"



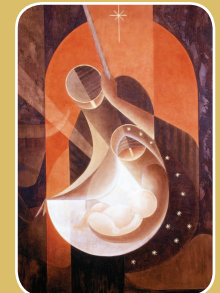
"St. Francis"



"Highly Favored"



"Pieta"



"Nativity"